



**colidrone.**  
Heavy tasks. Light solutions.

# What we offer



**colidrone.**  
Heavy tasks. Light solutions.

## Orthophotos

- Application: inspections of industrial plants, construction works' progress monitoring, distance and perimeter measurement etc.
- Pixel size – depending on your needs – even 3 cm
- X, Y, Z accuracy – 5 cm
- We can provide basic statistic analysis, e.g. housing density, forest density etc.
- Data delivered in geotiff, .tiff format or other, depending on the customer's wish



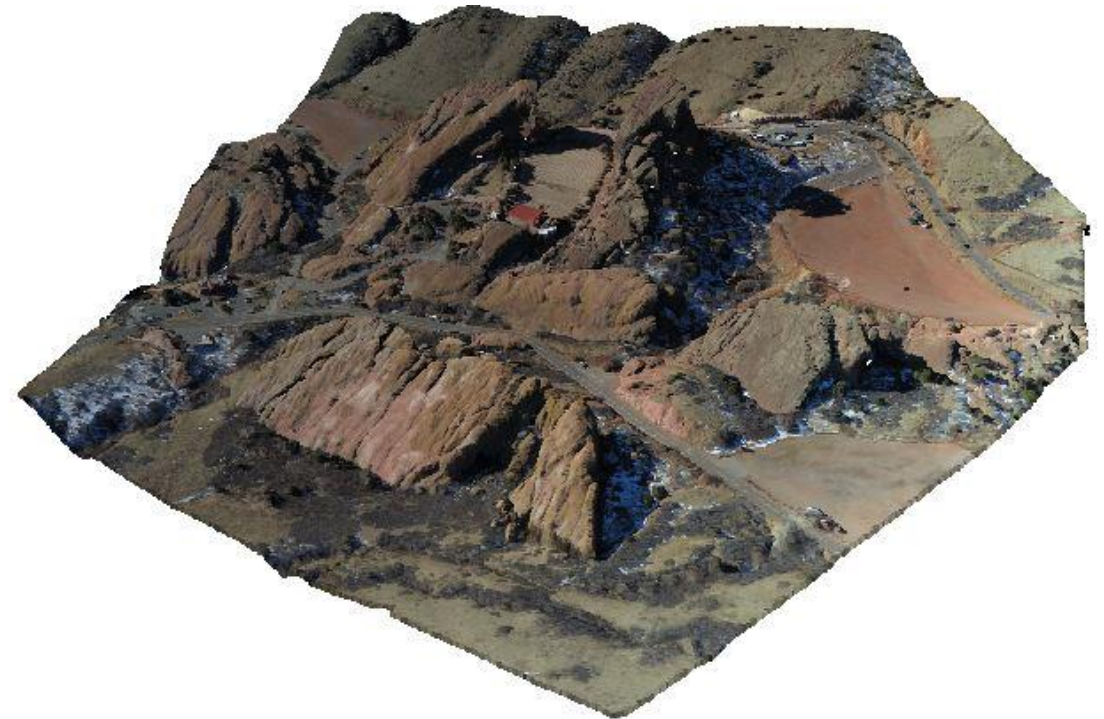
# What we offer



**colidrone.**  
Heavy tasks. Light solutions.

## Digital terrain model

- Application: terrain analysis, stockpile volume measurement, industrial sites monitoring
- Elevation accuracy – 15-25 cm
- On demand we can provide stockpile volumes, hydrological analysis, topographic profiles. • DTM is offered in LandXML, .pts, .ptx, .rcp, formats.

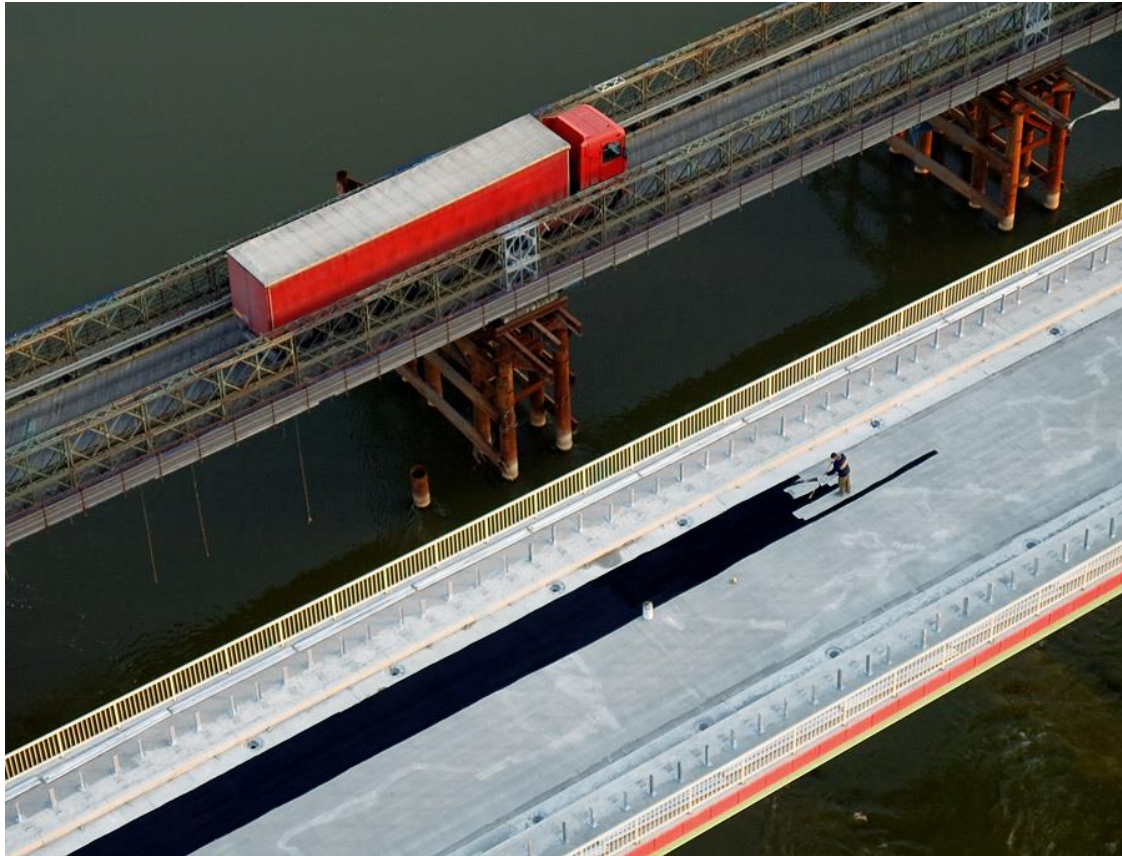




# What we offer



**colidrone.**  
Heavy tasks. Light solutions.



## Oblique and vertical aerial photographs

- Used in construction, infrastructure supervision, advertising of cities and buildings, mass events and many others.
- Possible applications: monitoring of changes in land use structure, illegal logging of forests, open-pit mines, monitoring of landslides, changes in drainage patterns of rivers or damage due to mining related activities.

# What we offer



**colidrone.**  
Heavy tasks. Light solutions.

## 3D modelling with texture mapping

- Detailed models of buildings and other objects – both manmade and natural – textured with photos.
- Metric model enabling complete analysis of the condition of the object and 3D print.

## Thermal imaging

- Inspection of photovoltaic cells, power lines, etc.
- Detection of heat leaks of buildings.



**colidrone.**  
Heavy tasks. Light solutions.

# Advantages

- Inspection of dangerous and non accessible places with no danger for employees
- Visual control of the project
- Quick and exact measurement
- Low flight (200-300 m) enables much better quality than aerial photos taken from airplane
- The application of drones is much more economical than airplanes

# What we fly



**colidrone.**  
Heavy tasks. Light solutions.



## Unmanned Aircraft FENIX

- Wingspan: 1900 mm
- Max take-off weight: 3,5 kg
- Max load: 1,0 kg
- Cruising speed: 13 m/s
- Flight time: up to 60 min
- Flight height: up to 2000 m

Mechanical stabilisation of the camera,  
Autonomous, programmable photo shooting

Digital camera, 24MPx with UV filter

Voigtlander lens 40mm

# What we fly



**colidrone.**  
Heavy tasks. Light solutions.

## Unmanned vehicle GRYF

- Number of rotors: 6
- Total height: 625 mm
- Aircraft net weight: 3600 g
- Max take-off weight 8200 g
- Cruising speed: 8 m/s
- Max speed: 16 m/s
- Rate of climb: 5 m/s
- Max resolution: 1 cm/px
- Propulsion: Electric motors 6x500W
- Vertical take-off
- Vertical landing





# Contact details



**colidrone.**  
Heavy tasks. Light solutions.

- The cost depends on the scope of works, deadline and location.
- We will eagerly present details during a phone call or at a meeting in person.

Paweł Złotkowski

[pawel.zlotkowski@colidrone.pl](mailto:pawel.zlotkowski@colidrone.pl)

+48 692 917 627